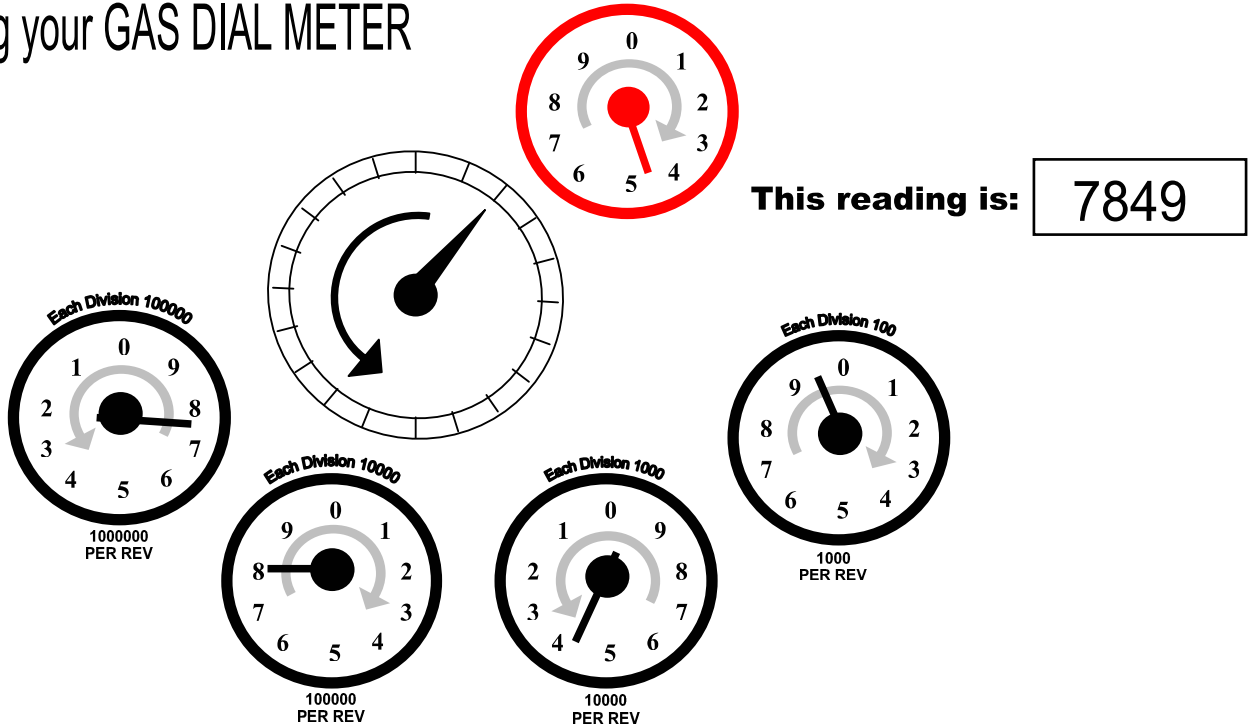
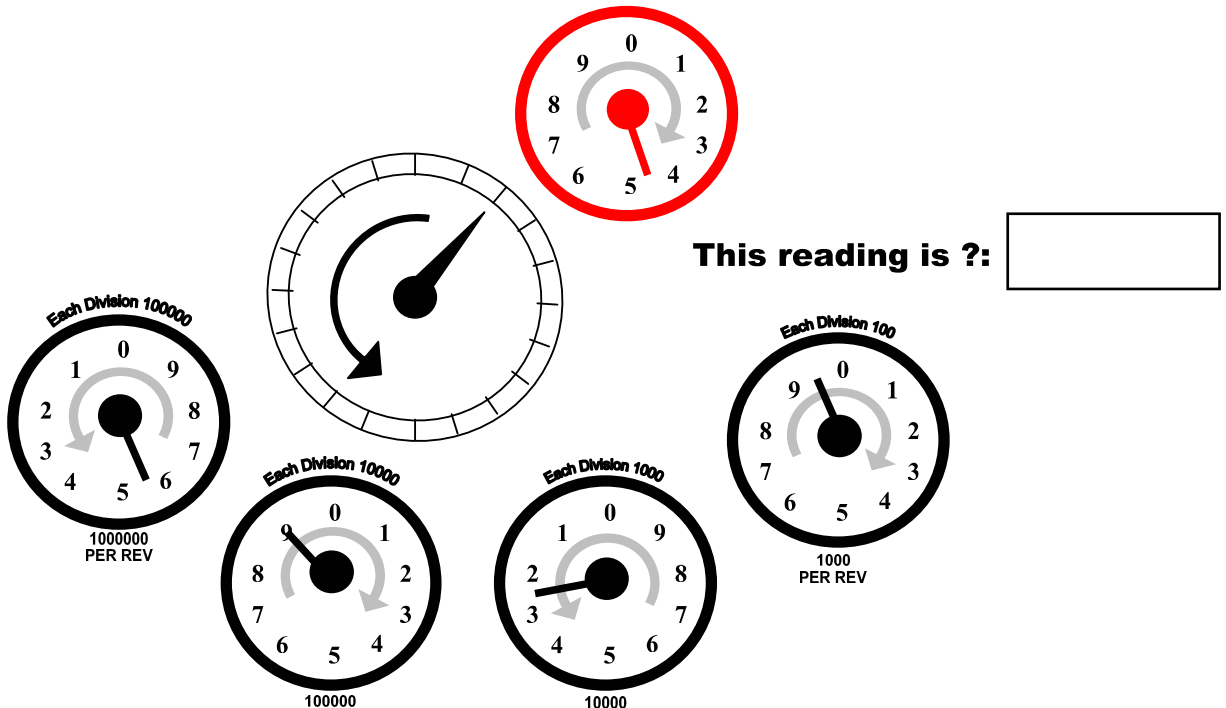


# Reading your GAS DIAL METER

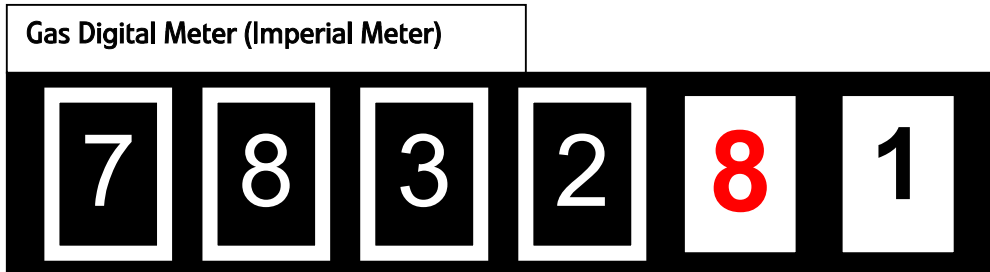


To read a GAS DIAL meter, look at the position of the pointers on the dials and follow these instructions:

- Read the dials from left to right.
- Ignore the large dial and the red dial.
- When the pointer is between two numbers, always write down the lower number. This is not necessarily the number nearest to the pointer.
- If the number is between 9 and 0, use 9.



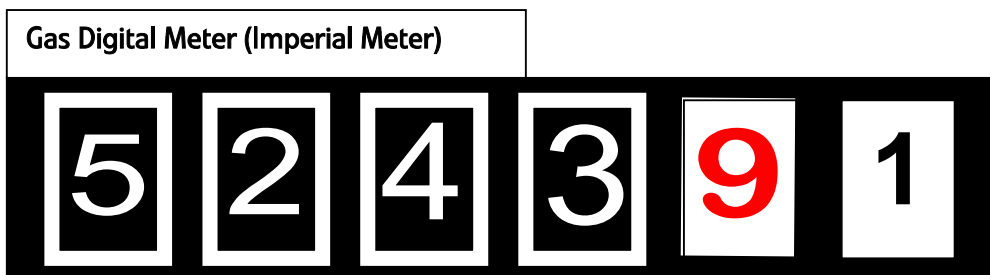
## Reading a GAS DIGITAL METER



When reading your Gas Digital Meter, please be aware:

- Ignore any numbers in red
- Ignore any numbers after a decimal point
- Use only the white digits

This Reading  
would be: 7832



When reading your Gas Digital Meter, please be aware:

- Ignore any numbers in red
- Ignore any numbers after a decimal point
- Use only the white digits

What is this reading?

## Reading a 5 digit GAS DIGITAL METER

5 Digit Digital Meter

**85965 00 B**

m<sup>3</sup>

This Reading  
would be: 85965

To read your Gas 5 Digit Digital meter, use only the first five numbers.

5 Digit Digital Meter

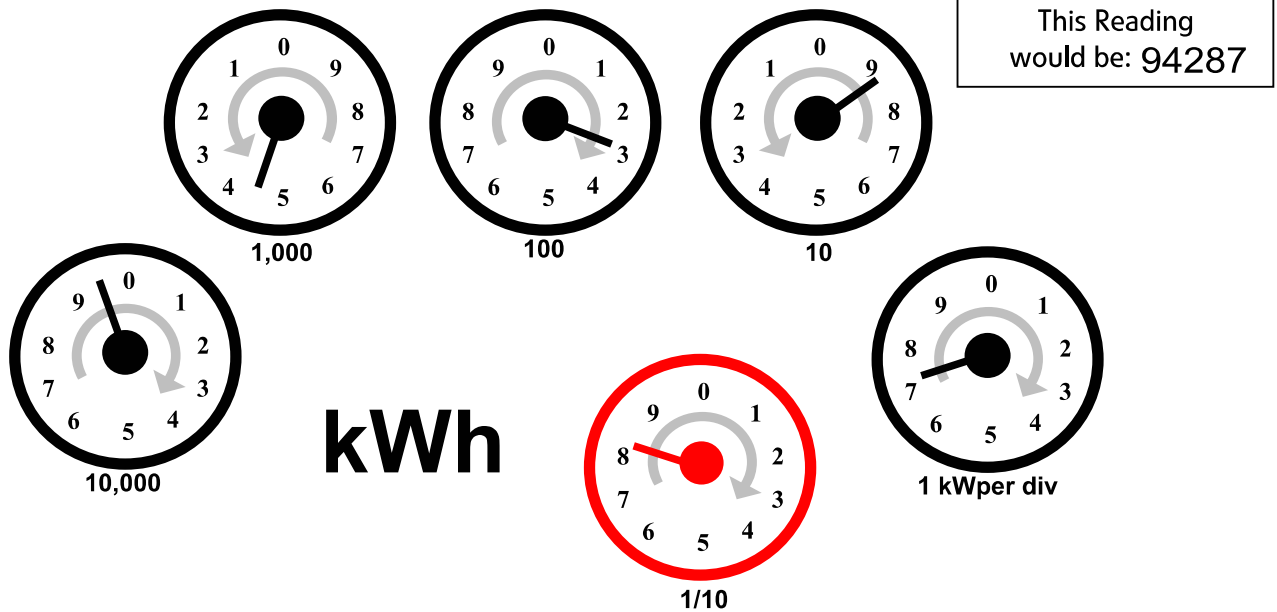
**24783 00 B**

m<sup>3</sup>

What is this reading?

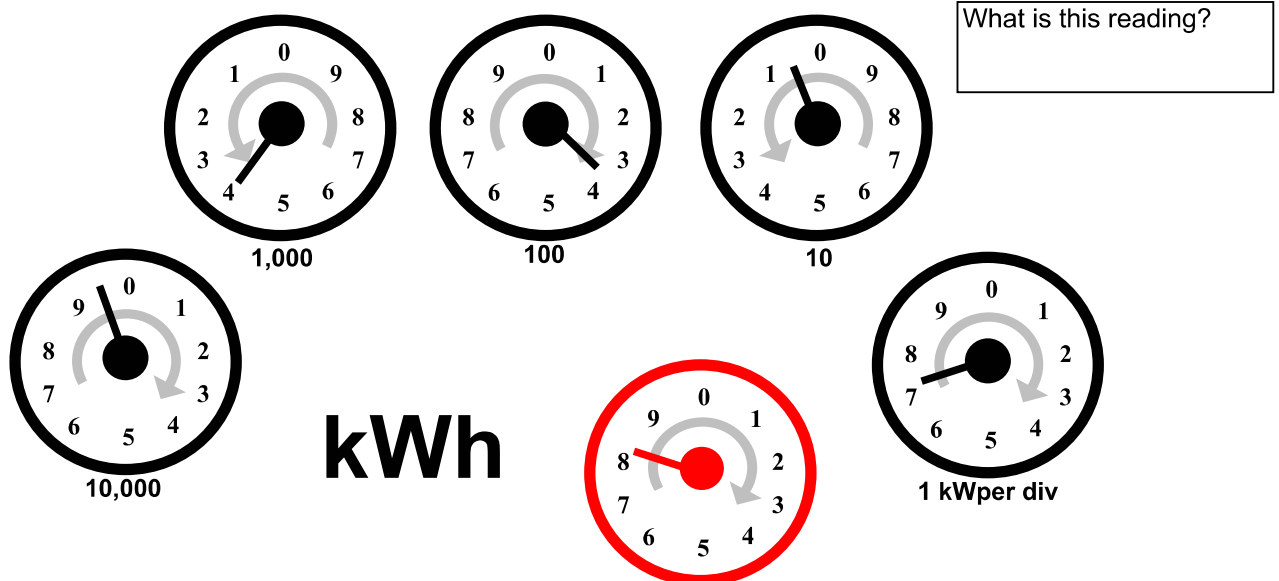
To read your Gas 5 Digit Digital meter, use only the first five numbers.

## Reading an ELECTRIC DIAL METER

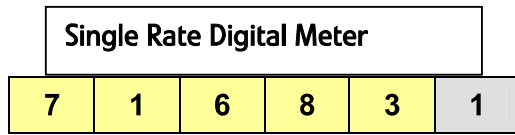


To read an ELECTRIC DIAL meter, look at the position of the pointers on the dials and follow these instructions:

- Read the dials from left to right starting with the dial marked 10,000.
- Ignore the 1/10 red dial .
- When the pointer is between two numbers, always write down the lower number. This is not necessarily the number nearest to the pointer.
- If the pointer is exactly on a number, write it down and underline it.
- If any of the numbers you have underlined are followed by a 9. You will need to take one away from the number that you have underlined.

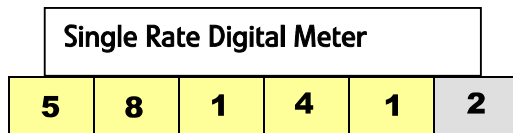


## Reading an ELECTRIC DIAL METER



This Reading  
would be: 71683

Read the numbers from left to right, ignoring the final digit.



What is this reading?

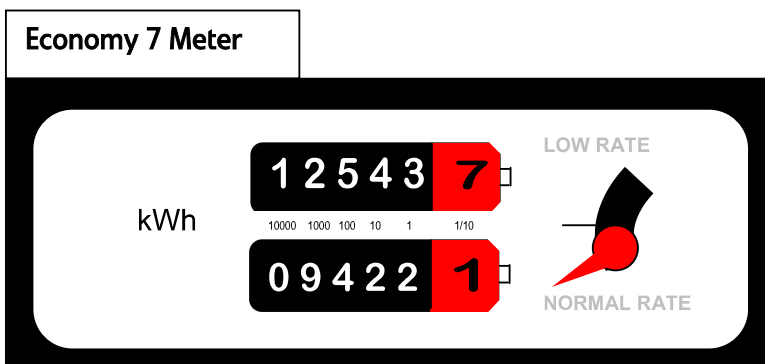
Read the numbers from left to right, ignoring the final digit.

## Reading an ELECTRIC ECONOMY 7 METER



Read the numbers from left to right ignoring the very last digit.

In this example, Low Rate would be:	03781	In this example, Normal Rate would be:	54814
--	-------	---	-------



Read the numbers from left to right ignoring the very last digit.

In this example, Low Rate would be:		In this example, Normal Rate would be:	
--	--	---	--